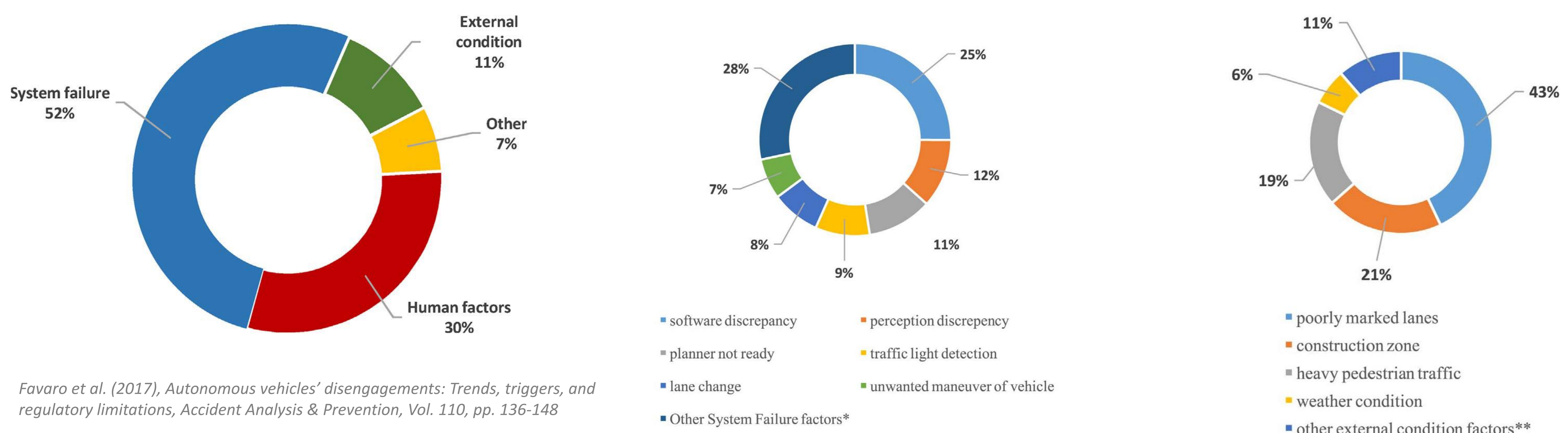


Joint Stakeholder Workshop - Graz, 9th Oct 2019

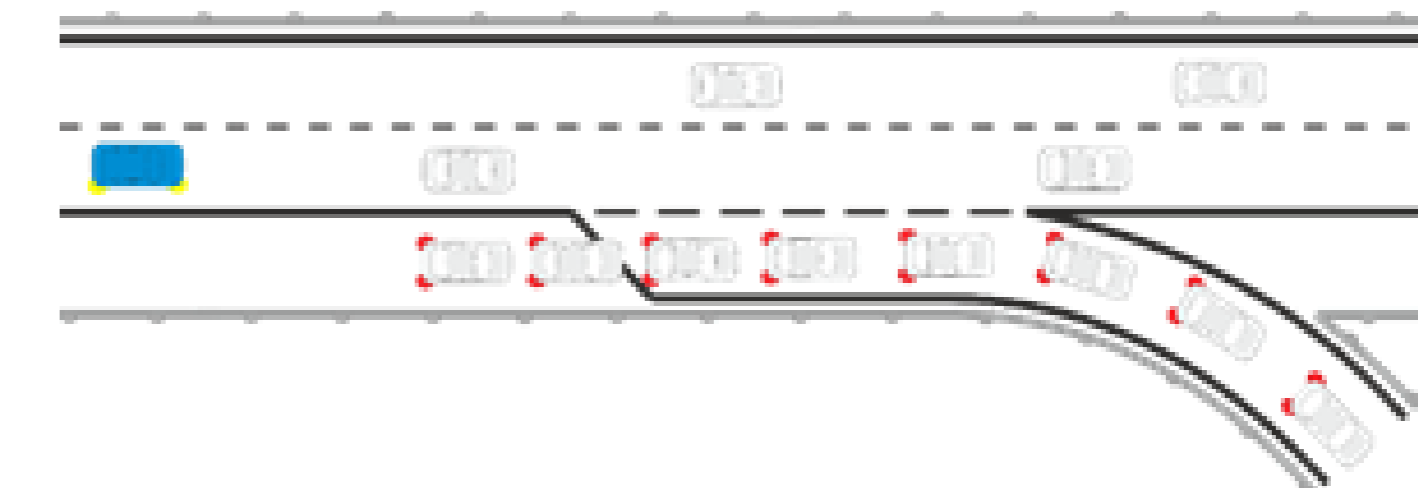
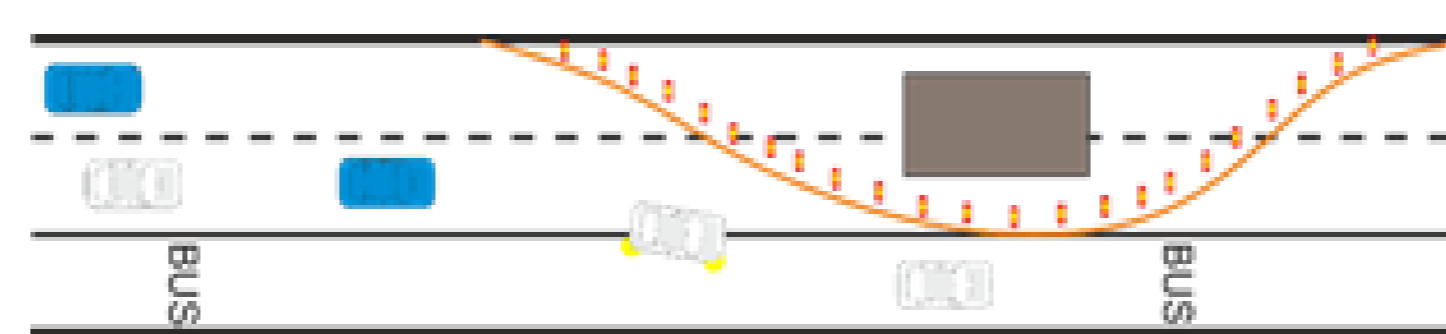
# Selected Use Cases

## When do disengagements occur?

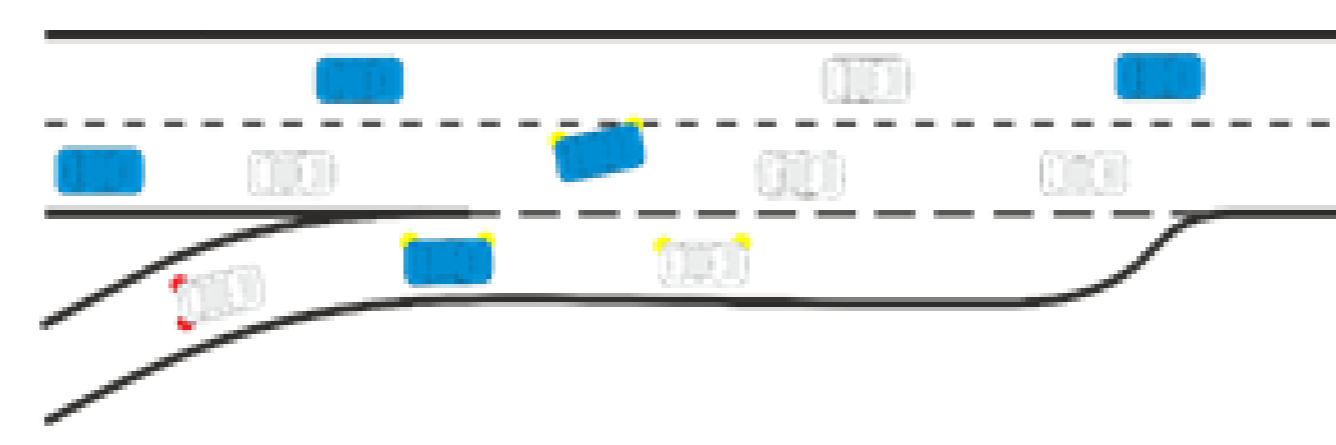


## A selection of relevant use cases

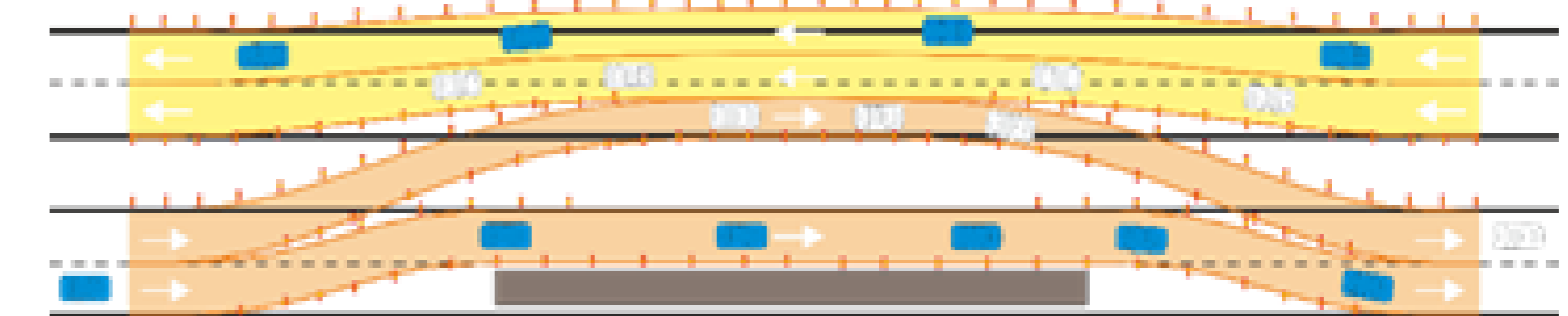
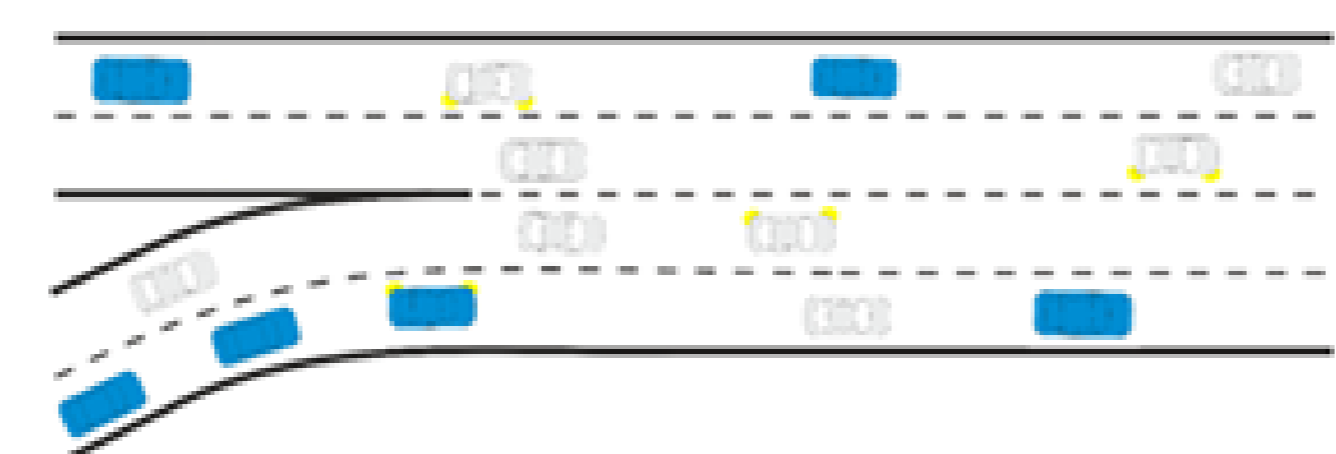
1. Prevent ToC/MRM by providing vehicle path information



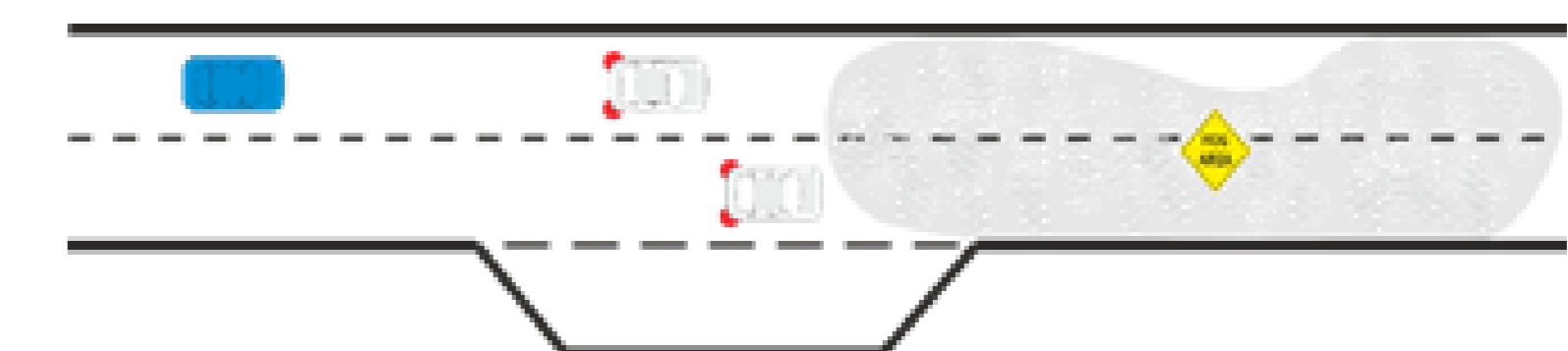
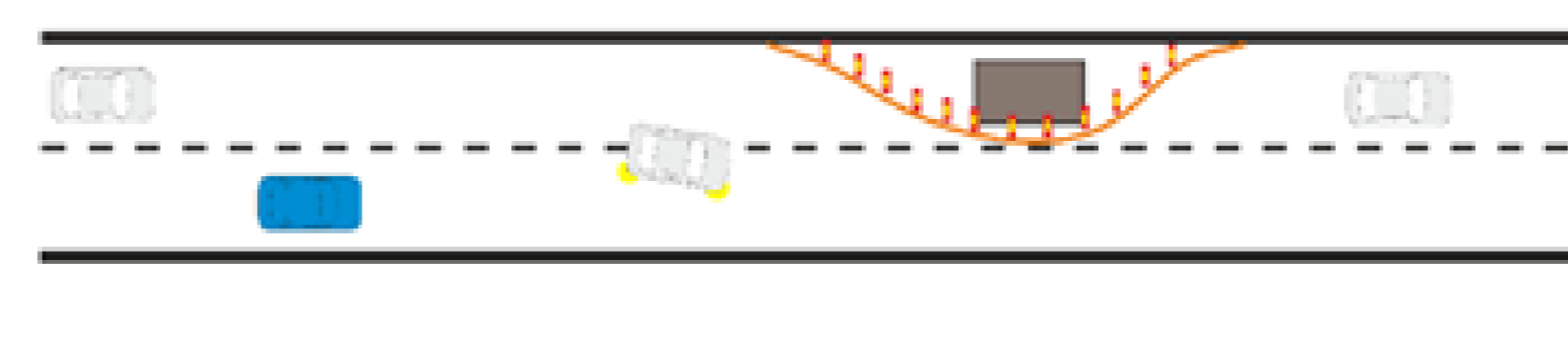
2. Prevent ToC/MRM by providing speed, headway and/or lane advice



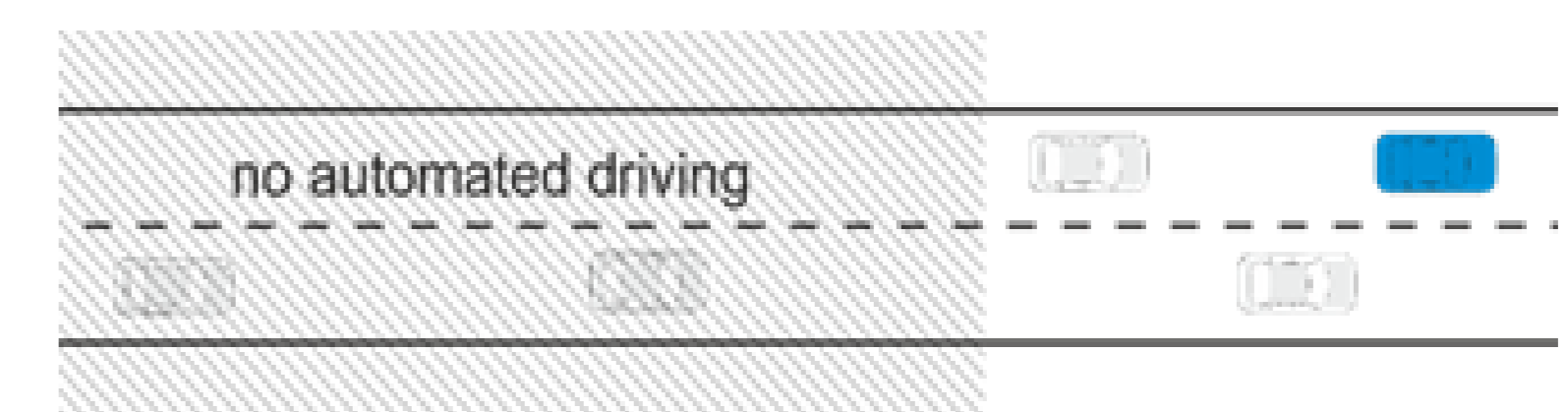
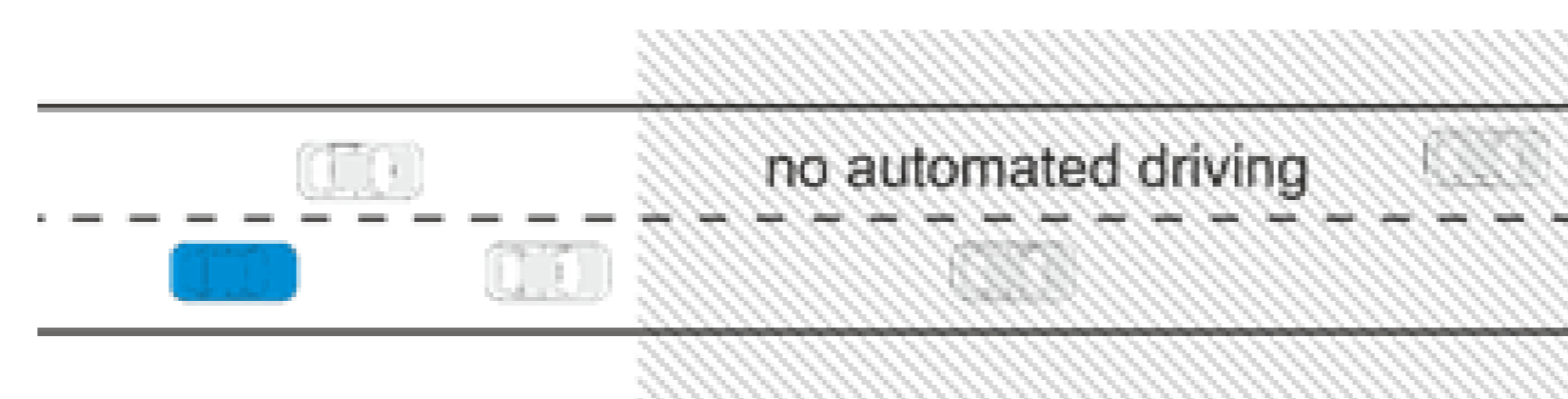
3. Prevent ToC/MRM by traffic separation



4. Manage MRM by guidance to safe spot



5. Distribute ToC/MRM by scheduling ToCs



Social media:

- [www.transaid.eu](http://www.transaid.eu)
- [@transaid\\_h2020](https://twitter.com/transaid_h2020)
- [www.linkedin.com/groups/13562830/](https://www.linkedin.com/groups/13562830/)
- [www.facebook.com/transaidh2020/](https://www.facebook.com/transaidh2020/)

This project has received funding from the European Union's Horizon 2020 research and innovation programme under grant agreement No 723390.

